

Customer :

customer

Customer part :

customer part

Comment :

Comment

S1=1.5

S2=2.07

Tmax=456

Tp S2=495.0

PI=0.42

HI=125

Sample =1661.10

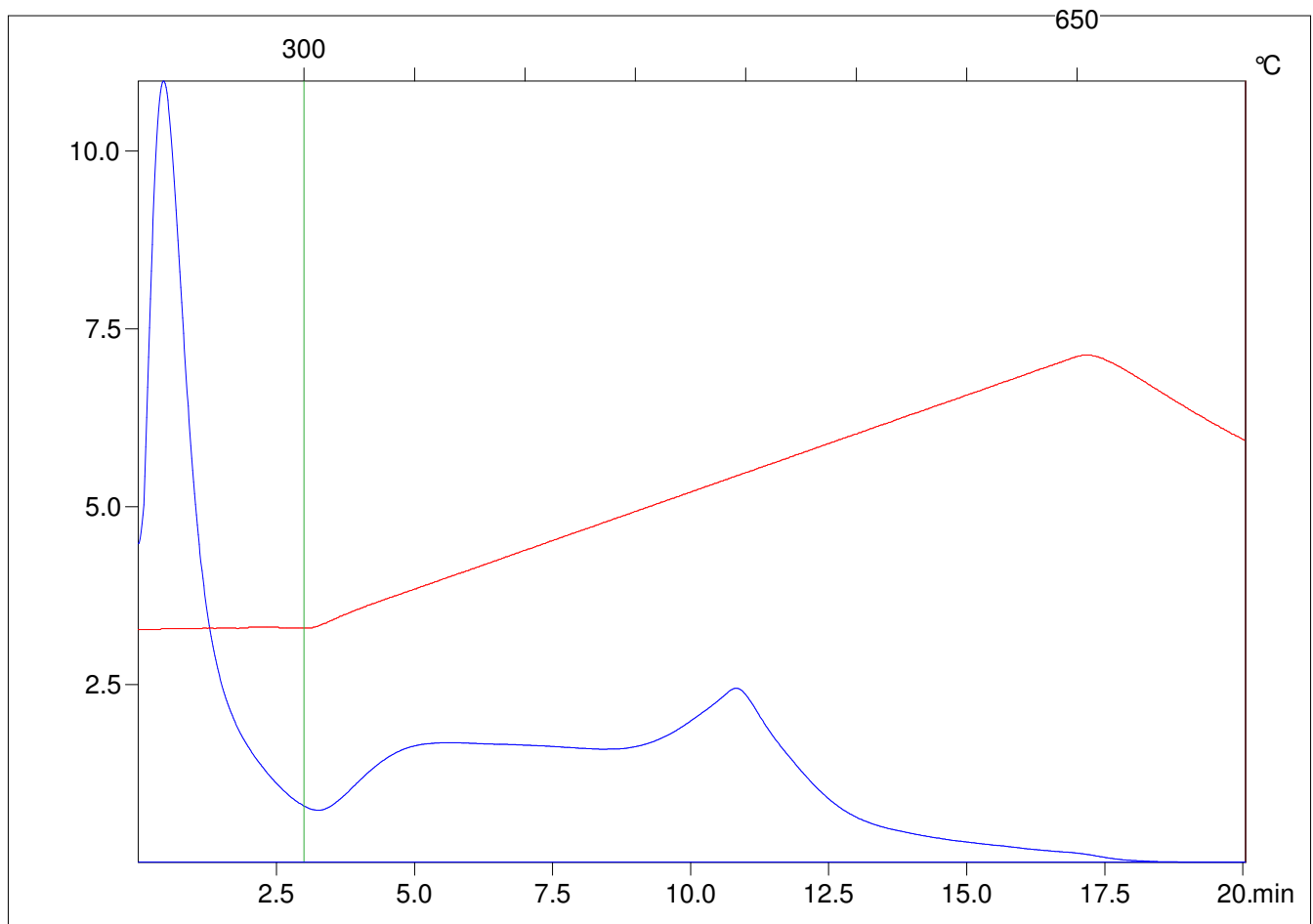
Method =Bulk Rock

Cycle=Basic

KFID(10*9)=1444

Qty =70.5

TOC=1.66



C:\VINC\PK1792\PK090.R00 : FID pyrolysis graphic

State

Pyro Status

Oxi Status